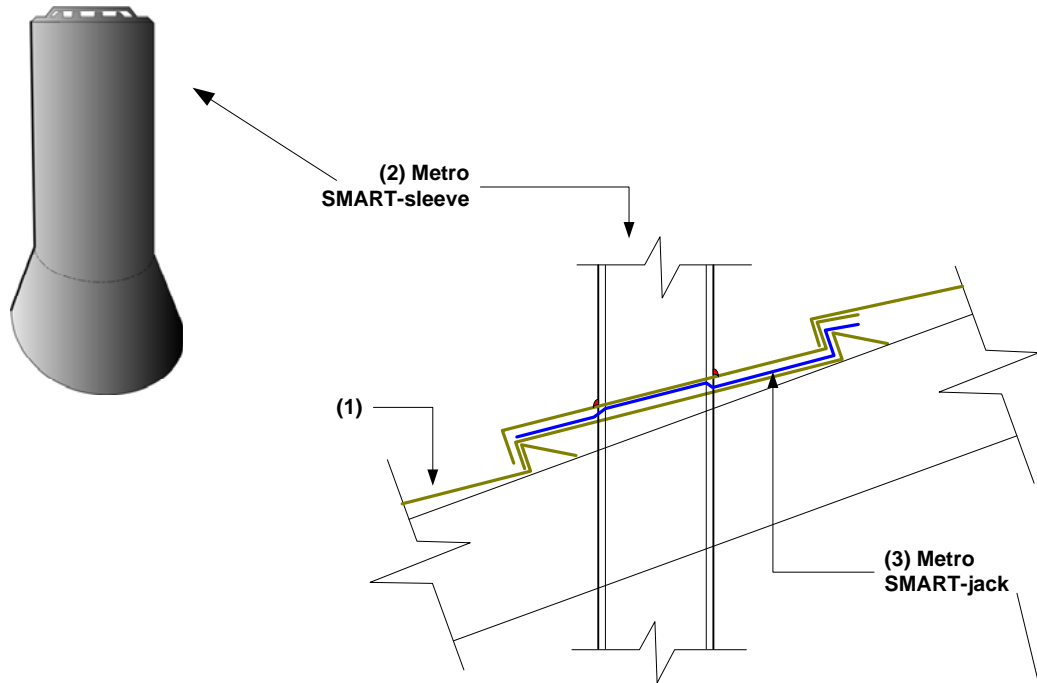


VENT PIPE Cover Detail

Metro SMART-sleeve Detail

(EXPOSED Fastened Panels - MetroSHAKE®, MetroTILE®, MetroROMAN® & MetroCOTTAGE™ Shingle)

Panels **DIRECT** to DECK



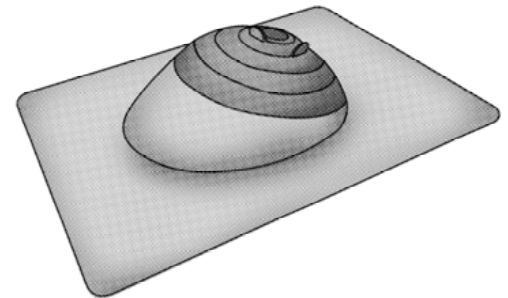
GENERAL: The SMART-sleeve is Galvalume® steel stone-coated pipe-cover to match perfectly with the SMART-jack and surrounding panels on the roof. It merely slides over the pipe penetration and is held in place by a screw through the back into the pipe.

(1) PANELS: Metro Stone-Coated Steel (Galvalume® AZ-50 Steel base) panels and accessories.

(2) METRO SMART-sleeve: Available in one size to fit pipes from 1-inch to 4-inch dia. SMART-sleeves have a critter guard over the top to prevent rodents from entering the pipe.

(3) METRO SMART-jack: Available in two (2) sizes 3-1 & 3-4 to fit pipes from 1-¼" - 4" inch dia. SMART-jacks incorporate a self-sealing rubber gasket flange that eliminates the need for sealant. The entire SMART-jack is stone coated to blend perfectly with the surrounding Metro panels.

WARNING ! DISSIMILAR METALS – COPPER & LEAD flashings should not be used with Metro Roof Products and accessories. (Refer to Metro SMARTbrief Technical Bulletin #02004).



FILENAME	009EX-VENT-PIPE-COVER-SMART-SLEEVE.VSD	
DATE	9-21-06	REVISED 9/26/2014

Metro Roof Products
 3093 'A' Industry St., Oceanside
 CA USA 92054
www.metroroofs.com