



SMART Brief

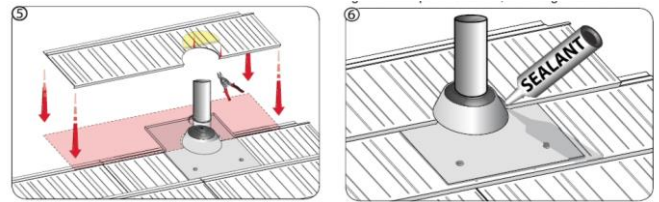
T E C H N I C A L B U L L E T I N

DATE: 18 June 2014 **No:** SB-26-180601 – (rev-81516)
TO: Contractors & Distributors **Page** 1 of 2
FROM: Metro Technical Services Division
SUBJECT: **Installing Solar Systems on Metro roofs**

When installing a solar panel system above a Metro roof, mounting systems use either vertical ‘Legs’ or ‘Brackets’ to support and elevate the solar panel system above the roof material, the respective solar panel manufacturer should be consulted as to the correct support height above the Metro roof, the number of vertical ‘leg’ or ‘bracket’ supports and the fastening method for each, into the roof deck framing for the system being used.

‘Leg’ Support Method:

Each support ‘leg’ is to be flashed with Metro SMART-Jack pipe penetration flashings in the same manner as a regular pipe penetration, as described in Metro’s



SOLAR SYSTEM FLASHING MOUNT:
As round pipe is often used to support solar systems, the details above can be used to flash the supporting solar members.

installs details for each profile. The “Sandwich” method of placing the Metro SMART-Jack between two Metro panel sections is recommended. Refer to pipe penetration flashing details noted in the Metro SHINGLE install details on the Metro website - http://www.metroroofs.com/install_details.cfm)

‘Bracket’ Support Method:

This method prevents direct penetration of the Metro panel as the ‘Bracket’ is shaped to fit up and over the Metro panel profile back lip allowing the bracket to exit between the panel courses and cantilevering past the back-lip and nose of the upper covering panel. the respective



Height Adjustable 18mm for Side Mount Rails

solar panel manufacturer should be consulted as to the correct support height above the Metro roof, the number of ‘bracket’ supports and the fastening method for each, into the roof deck framing for the system being used. Metro recommends a wear-pad using a double layer of peel-n-stick underlay material be adhered to the underside of any ‘Bracket’ coming in close contact with the Metro

Metro Roof Products

3093 ‘A’ Industry Street
 Oceanside CA 92054
 Tel: (760) 435-9842
 Fax: (760) 435-1162

www.smartroofs.com

Metro Roof Products SMARTBrief Technical Bulletins are for use by all Metro Roof Products customers. Each SMARTBrief is coded with a reference number and can be used to support various trade practices that are acceptable to, and have met Metro Roof Products quality standards in effect at the time. Metro Roof Products reserves the right to amend or update these SMARTBrief Technical Bulletins at any time.
 10/19/2016 026-180601-Solar-System-Over-Metro-Roof-(Rev-81516)



SMART *Brief*

T E C H N I C A L B U L L E T I N

panel top surface after it exits out from between two Metro panels at the course line.

Metro product warranty is not affected by the installation of a solar panel system installed above a Metro roof. The solar installation company takes full responsibility to ensure long-life weather-proof flashing procedures are followed wherever the Metro panel is perforated with 'Legs' or 'Brackets' as described above.

Metro Roof Products

3093 'A' Industry Street
Oceanside CA 92054
Tel: (760) 435-9842
Fax: (760) 435-1162

www.smartroofs.com

Metro Roof Products SMARTBrief Technical Bulletins are for use by all Metro Roof Products customers. Each SMARTBrief is coded with a reference number and can be used to support various trade practices that are acceptable to, and have met Metro Roof Products quality standards in effect at the time. Metro Roof Products reserves the right to amend or update these SMARTBrief Technical Bulletins at any time.
10/19/2016 026-180601-Solar-System-Over-Metro-Roof-(Rev-81516)